

# THE REASON

VIOLIN

Words and Music by  
DANIEL ESTRIN and  
DOUGLAS ROBB

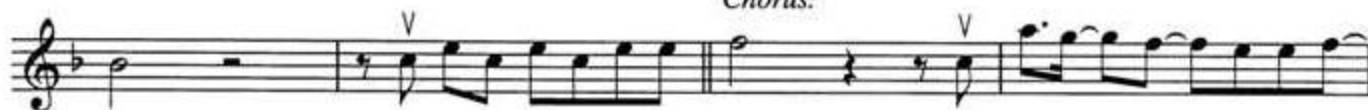
Moderately slow ( $\text{♩} = 84$ )



Verses 1 & 2:



Chorus:



\*Play cue note 2nd time.

*Erwin Music Studio*

Bridge:

The Bridge section consists of two staves of music. The first staff begins with a treble clef, a key signature of one flat (B-flat), and a common time signature. It features a half note G4, followed by a quarter rest, then a series of eighth notes: A4, Bb4, A4, G4, F4, E4, D4, C4. This is followed by a quarter note G4, a quarter rest, and another series of eighth notes: A4, Bb4, A4, G4, F4, E4, D4, C4. The second staff continues with a quarter note G4, a quarter rest, and the same eighth-note sequence as the first staff, ending with a double bar line.

Verse 3:

Verse 3 consists of two staves of music. The first staff starts with a treble clef, a key signature of one flat, and a common time signature. It begins with a quarter rest, followed by a quarter note G4 marked with a 'V' (accents), then a quarter note A4, a quarter note Bb4, a quarter note A4, a quarter note G4, a quarter note F4, a quarter note E4, a quarter note D4, and a quarter note C4. The second staff begins with a series of eighth notes: A4, Bb4, A4, G4, F4, E4, D4, C4. This is followed by a quarter note G4, a quarter rest, a quarter note G4 marked with a 'V', a quarter note A4, a quarter note Bb4, a quarter note A4, a quarter note G4, a quarter note F4, a quarter note E4, and a quarter note D4.

Chorus:

The Chorus section consists of seven staves of music. The first staff starts with a treble clef, a key signature of one flat, and a common time signature. It begins with a quarter note G4, a quarter rest, a quarter note G4 marked with a 'V', a quarter note A4, a quarter note Bb4, a quarter note A4, a quarter note G4, a quarter note F4, a quarter note E4, and a quarter note D4. The second staff begins with a quarter note G4, a quarter rest, a quarter note G4 marked with a 'V', a quarter note A4, a quarter note Bb4, a quarter note A4, a quarter note G4, a quarter note F4, a quarter note E4, and a quarter note D4. The third staff begins with a quarter note G4, a quarter rest, a quarter note G4 marked with a 'V', a quarter note A4, a quarter note Bb4, a quarter note A4, a quarter note G4, a quarter note F4, a quarter note E4, and a quarter note D4. The fourth staff begins with a quarter note G4, a quarter rest, a quarter note G4 marked with a 'V', a quarter note A4, a quarter note Bb4, a quarter note A4, a quarter note G4, a quarter note F4, a quarter note E4, and a quarter note D4. The fifth staff begins with a quarter note G4, a quarter rest, a quarter note G4 marked with a 'V', a quarter note A4, a quarter note Bb4, a quarter note A4, a quarter note G4, a quarter note F4, a quarter note E4, and a quarter note D4. The sixth staff begins with a quarter note G4, a quarter rest, a quarter note G4 marked with a 'V', a quarter note A4, a quarter note Bb4, a quarter note A4, a quarter note G4, a quarter note F4, a quarter note E4, and a quarter note D4. The seventh staff begins with a quarter note G4, a quarter rest, a quarter note G4 marked with a 'V', a quarter note A4, a quarter note Bb4, a quarter note A4, a quarter note G4, a quarter note F4, a quarter note E4, and a quarter note D4, ending with a double bar line.